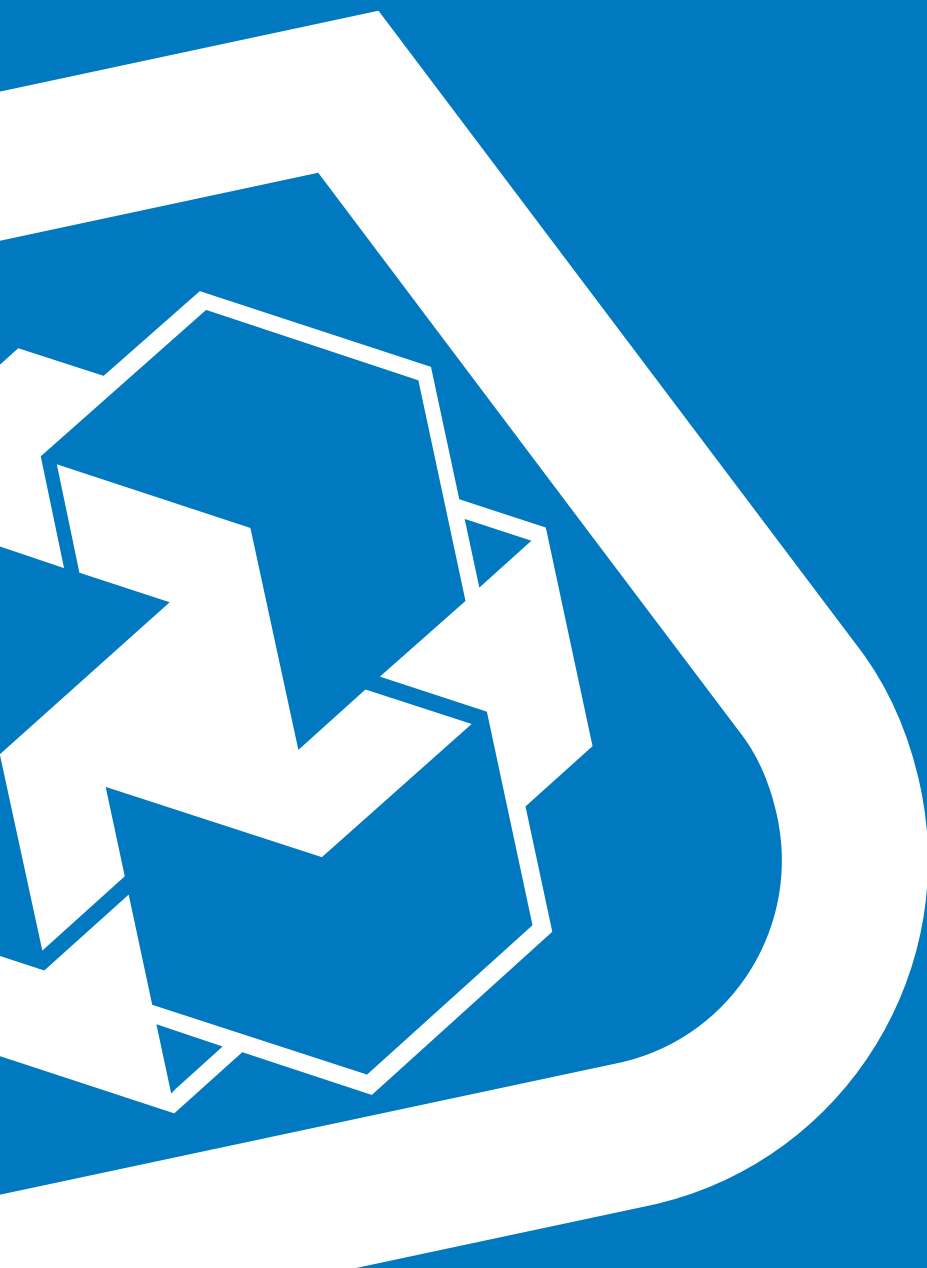


# PRODUCTS FOR **STRUCTURAL STRENGTHENING**



# SYSTEM SOLUTIONS FOR THE **CONSTRUCTION** INDUSTRY

**1**  
Tile & Stone  
Installation  
Systems

**2**  
*UltraCare* Stone,  
Tile, Grout Care  
and Maintenance  
Solutions

**3**  
Profiles for Floors  
and Coverings

**4**  
Profiles and  
Shower Systems

**5**  
Skirting Boards

**6**  
Raised Floors

**7**  
Floor Covering  
Installation  
Systems

**8**  
Products for  
Sports Surfaces

**9**  
Products for Wood  
Flooring

**10**  
Cementitious and  
Resin Flooring  
Systems

**11**  
Waterproofing  
Systems

**12**  
Concrete  
Restoration  
Systems

**13**  
Products for  
Structural  
Strengthening

**14**  
Concrete Flooring  
Solutions

**15**  
Admixtures for  
Concrete

**16**  
Cement Additives

**17**  
Products for  
Underground  
Construction (UTT)

**18**  
Products for the  
Marine Industry

## TABLE OF CONTENTS

### PRODUCTS FOR STRUCTURAL STRENGTHENING



Introduction.....	2-3
Technology Logos Index.....	3

### PRODUCT INFORMATION

#### Primer

<i>MapeWrap® Primer 1</i> .....	4
---------------------------------	---

#### Epoxy Adhesives

<i>MapeWrap 11</i> .....	4
<i>MapeWrap 12</i> .....	4

#### Saturants

<i>MapeWrap 21</i> .....	5
<i>MapeWrap 21 TG</i> .....	5
<i>MapeWrap 31</i> .....	5
<i>MapeWrap 31 T</i> .....	6

#### Carbon Fiber Fabrics

<i>MapeWrap C Uni-Ax 300</i> .....	6
<i>MapeWrap C Uni-Ax 600</i> .....	6

<i>MapeWrap C Bi-Ax</i> .....	7
-------------------------------	---

#### Glass Fiber Fabrics

<i>MapeWrap G Bi-Ax</i> .....	7
<i>MapeWrap G Uni-Ax</i> .....	7

#### Laminates

<i>Carboplate® E 170</i> .....	8
<i>Maperod® C</i> .....	8
<i>Maperod G</i> .....	8

#### Structural-Strengthening Cords

<i>MapeWrap C Fiocco</i> .....	8
<i>MapeWrap G Fiocco</i> .....	8

#### Corrosion Protection

<i>Mapefer™ 1K</i> .....	9
<i>Planibond® 3C</i> .....	9
<i>Mapeshield™ CI 100</i> .....	9
<i>Mapeshield CI 110</i> .....	10
<i>Mapeshield I</i> .....	10

#### Epoxy Adhesives

<i>Planibond AE</i> .....	10
<i>Planibond AE Fast</i> .....	11
<i>Epojet™</i> .....	11

#### Concrete Repair Mortars

<i>Planitop® X</i> .....	11
<i>Planitop XS</i> .....	12
<i>Planitop 12 SR</i> .....	12
<i>Planitop 15</i> .....	12

#### Coatings and Sealers

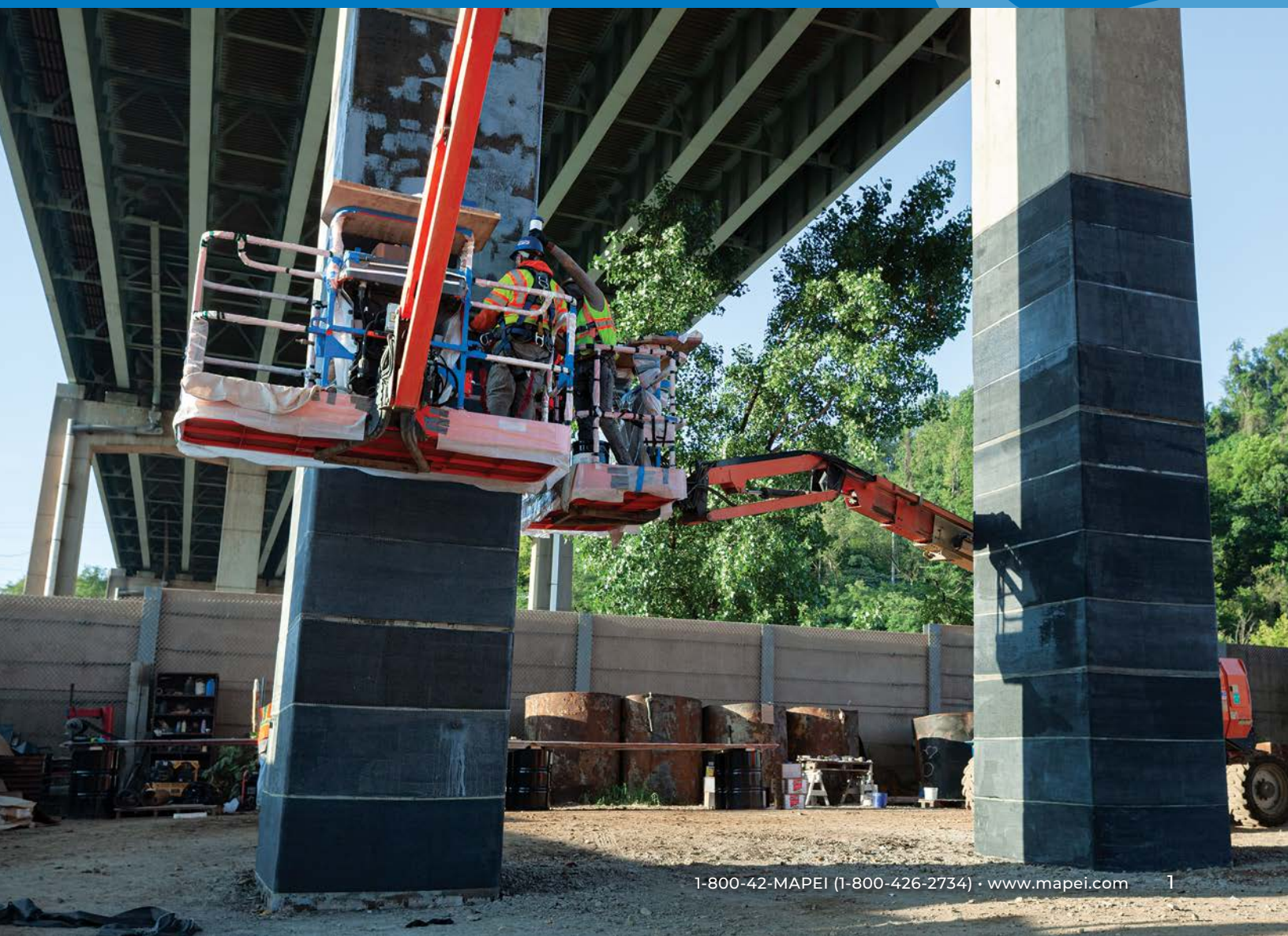
<i>Mapelastico®</i> .....	13
<i>Elastocolor® Texture</i> .....	13
<i>Elastocolor Primer AR</i> .....	13
<i>Elastocolor Primer WB</i> .....	14
<i>Elastocolor Flex</i> .....	14
<i>Elastocolor Coat</i> .....	14





## A WORLDWIDE LEADER

Originally established in 1937, today MAPEI is a privately owned global corporation headquartered in Milan, Italy, with 96 subsidiaries in 57 countries and 93 plants in 36 nations. The company specializes in manufacturing chemical products for building, including waterproofing products, specialty mortars and admixtures for concrete, products to restore historic buildings, and decorative and protective coatings for concrete surfaces. In addition, MAPEI is the world leader in the manufacturing of mortars, grouts, adhesives and complementary products for installing all types of floor and wall coverings. MAPEI Corporation, the division responsible for supporting the North American markets, is based in Deerfield Beach, Florida, and employs over 1,530 team members – ranging from Manufacturing and R&D to Technical Services and Sales. MAPEI Caribe, based in Puerto Rico, has more than 65 employees. The Canadian subsidiary MAPEI Inc. supports those efforts with about 410 additional employees.





## SUPERIOR PRODUCTS

### A Complete Range of Products

MAPEI produces the most innovative products for the construction market. More than 7,700 products globally (adhesives, sealants, mortars, admixtures, latex, etc.) are manufactured in MAPEI's plants, which produce the world's most complete range of building products. Diversified, high-quality chemical products – from powdered adhesives, to liquid and paste products, to polymers – are created to meet the needs of more than 75,000 customers around the world.

### Quality Control

MAPEI is an ISO 9001-2000 certified company. Its products are produced according to exacting standards, strictly adhering to process and procedural guidelines with documented compliance. This rigid production format is vigilantly followed to ensure that every product is produced uniformly from batch to batch.



## PROFESSIONAL SUPPORT NETWORK

### Knowledgeable Sales Force

MAPEI offers the largest, most highly trained sales force within the industry to serve your needs for product application/ installation recommendations.

Its sales representatives are focused on supporting you with product knowledge, product demonstrations, product information, marketing support materials and other relevant tools to help you generate sales.



### Technical Expertise

An in-house Technical Services Call Center responds to customers' telephone inquiries with answers to installation challenges in real time. In addition, MAPEI can offer field support for job startups, product training and on-site problem resolution.

### Customer Service Plus

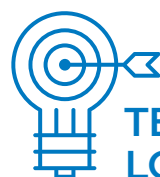
MAPEI's standards for customer service are best-in-class. Our leadership includes such service innovations as:

- Customer-friendly, efficient processes.
- One-call resolution.
- Employee commitment to effective customer dialogue.

### Innovative Research & Development

We have always been highly committed to this sector. Our research





## TECHNOLOGY LOGOS INDEX

Corrosion Inhibitor Enhanced™ products feature proprietary additives that fortify the passivation layer on embedded reinforcing steel, enhancing its resistance to corrosion.



CO<sub>2</sub> emissions measured throughout the product's life cycle are fully offset through the acquisition of third-party-certified carbon credits that support climate-mitigation projects.



scientists work within a global network comprising 36 centers, with our Corporate Research Centre in Milan acting as a hub to coordinate the activities of all the other centers and as a central analysis laboratory. The United States has four centers, and Canada has one. All equipped with cutting-edge equipment, the centers collaborate continuously with universities as well as scientific and industrial research institutes.

The research and development laboratories also provide support for our Technical Services Division to help provide solutions for even the most complex requests from our clients. Working alongside these centers are our quality-control laboratories, which are present in all the MAPEI Group's production facilities.

### Best-Backed<sup>SM</sup> Warranty Program

To bring it all together, MAPEI complements the industry's best products with simple, easy-to-understand requirements for a variety of warranty options.





### MapeWrap® Primer 1

#### Low-Viscosity, 100%-Solids, Epoxy Resin Primer for the MapeWrap Composite System

MapeWrap Primer 1 is a 100%-solids, moisture-tolerant, low-viscosity, two-component, epoxy resin that is used as a seal coat for consolidating and priming concrete substrates. As the first component of the MapeWrap composite system, MapeWrap Primer 1 penetrates cementitious pore structures and provides a high bond for the other system components.



### MapeWrap® 11

#### Structural Epoxy Putty Adhesive for Use with Structural Strengthening Systems

MapeWrap 11 is a two-component, 100%-solids, moisture-tolerant, structural epoxy used as an adhesive for the Carboplate® composite system. MapeWrap 11 is also used for leveling uneven concrete or masonry surfaces before application of MapeWrap fabrics or Carboplate and Maperod® C laminates.



### MapeWrap® 12

#### Structural Epoxy Putty Adhesive for Use with Structural Strengthening Systems in Warm Climates

MapeWrap 12 is a two-component, 100%-solids, moisture-tolerant, structural epoxy used as an adhesive for the Carboplate® composite system in warm climates. MapeWrap 12 is also used for leveling uneven concrete or masonry surfaces before application of MapeWrap fabrics or Carboplate and Maperod® C laminates.

	Product Code	Packaging
U.S.	7324604KIT	Kit: 1 U.S. gal. (3.79 L)

	Product Code	Packaging
U.S.	7320204KIT	Kit: 1 U.S. gal. (3.79 L)

	Product Code	Packaging
U.S.	7312204KIT	Kit: 1 U.S. gal. (3.79 L)



### MapeWrap® 21

#### Low-Viscosity, 100%-Solids, Epoxy Resin for Impregnation of MapeWrap Fabrics

MapeWrap 21 is a 100%-solids, moisture-tolerant, low-viscosity, epoxy resin used to encapsulate the MapeWrap composite system fabrics. MapeWrap 21 was specially developed to saturate and encapsulate carbon and glass fiber fabrics and to cure to a high-performance laminate. Once cured, the laminate provides additional strength to appropriate structural elements.



### MapeWrap® 21 TG

#### Low-Viscosity, 100%-Solids Epoxy Resin for Mechanical Saturation of MapeWrap Fabrics

MapeWrap 21 TG is a 100%-solids, moisture-tolerant, low-viscosity epoxy resin used to encapsulate the MapeWrap composite system fabrics via the wet layup technique. MapeWrap 21 TG was specially developed to saturate and encapsulate both carbon and glass fiber fabrics by way of mechanical saturation and to cure to a high-performance laminate. Once cured, the laminate provides additional strength to appropriate structural elements.



### MapeWrap® 31

#### Medium-Viscosity, 100%-Solids, Epoxy Resin for Impregnation of MapeWrap Fabrics

MapeWrap 31 is a 100%-solids, moisture-tolerant, medium-viscosity, epoxy resin for impregnating MapeWrap composite system fabrics by a dry layup method. MapeWrap 31 was specially developed to saturate and encapsulate carbon and glass fiber fabrics and to cure to a high-performance laminate. Once cured, MapeWrap 31 provides high mechanical strength properties.

	Product Code	Packaging
U.S.	7324104KIT	Kit: 1 U.S. gal. (3.79 L)

	Product Code	Packaging
U.S.	7322805	Kit: 1 U.S. gal. (3.79 L)

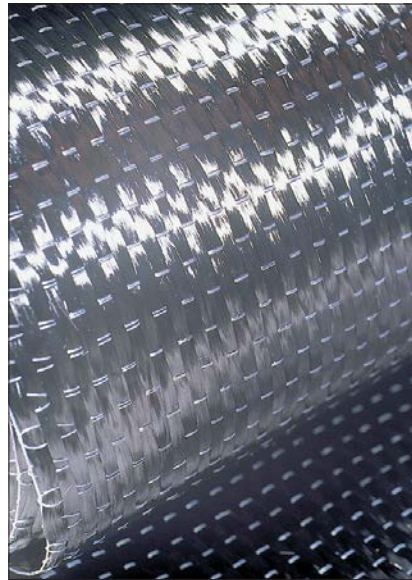
	Product Code	Packaging
U.S.	7323003 7324304KIT	Kit: 0.5 U.S. gal. (1.89 L) Kit: 1 U.S. gal. (3.79 L)



### MapeWrap® 31 T [NA]

#### Medium-Viscosity, 100%-Solids, Epoxy Resin for Dry-Layup Impregnation of MapeWrap Fabrics

*MapeWrap 31 T* is a 100%-solids, moisture-tolerant, medium-viscosity epoxy resin used to encapsulate the *MapeWrap* composite system fabrics using the dry layup method. *MapeWrap 31 T* was specially developed to saturate and encapsulate both carbon and glass fiber fabrics and to cure to a high-performance FRP laminate. Once cured, the laminate provides additional strength to appropriate structural elements.



### MapeWrap® C Uni-Ax 300

#### Uni-Directional Carbon Fiber Fabric

*MapeWrap C Uni-Ax 300* is a high-strength, uni-directional carbon fiber fabric that, when used with the *MapeWrap* family of two-component epoxy adhesives, forms an externally bonded fiber-reinforced polymer (FRP) reinforcement system engineered to increase the strength of existing structural elements. *MapeWrap C Uni-Ax 300* is applied to the surface of structural members in buildings, parking garages, bridges, marine piles and other structures to contribute significant strength, without increasing the dead load supported by the structure.





### MapeWrap® C Uni-Ax 600

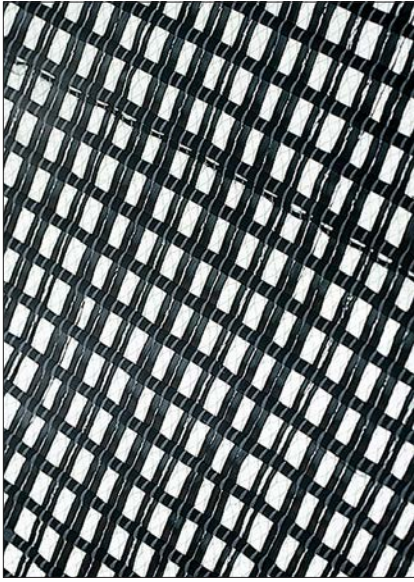
#### High-Strength, Uni-Directional Carbon Fiber Fabric

*MapeWrap C Uni-Ax 600* is a high-strength, uni-directional carbon fiber fabric that, when used with the *MapeWrap* family of two-component epoxy adhesives, forms an externally bonded fiber-reinforced polymer (FRP) reinforcement system. *MapeWrap C Uni-Ax 600* is part of an engineering solution that allows for an increase in the strength of structural elements without increasing the dead load supported by the structure.

	Product Code	Packaging
U.S.	7323304	Kit: 1 U.S. gal. (3.79 L)

	Product Code	Packaging
U.S.	ICC-certified 	
	73F0604050	Roll: 15.75" x 164' (40 cm x 50.0 m)
	Non-ICC-certified	
	73F0604050W	Roll: 15.75" x 164' (40 cm x 50 m)

	Product Code	Packaging
U.S.	ICC-certified 	
	73F1504050	Roll: 15.75" x 164' (40 cm x 50.0 m)
	73F1506050	Roll: 23.6" x 164' (60 cm x 50.0 m)
	Non-ICC-certified	
	73F1504050W	Roll: 15.75" x 164' (40 cm x 50.0 m)
	73F1506050W	Roll: 23.6" x 164' (60 cm x 50.0 m)



### MapeWrap® C Bi-Ax

#### High-Strength, Bi-Directional Carbon Fiber Fabric

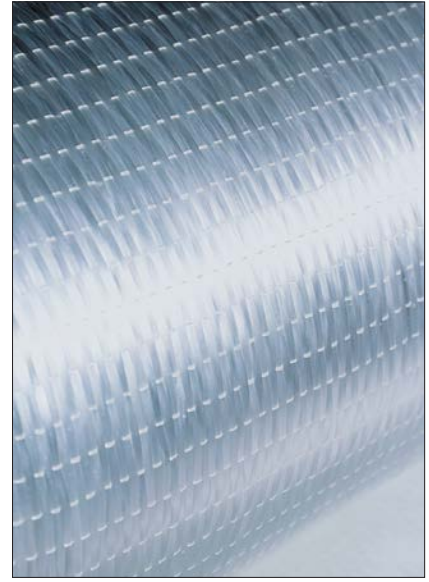
*MapeWrap C Bi-Ax* is a high-strength, bi-directional carbon fiber fabric in which the primary fibers are oriented in the 0°/90° directions. When used with the *MapeWrap* family of two-component epoxy adhesives, *MapeWrap C Bi-Ax* forms an externally bonded fiber-reinforced polymer (FRP) reinforcement system engineered to increase the strength of existing structural elements. When applied to the surface of structural members in buildings, parking garages, bridges, marine piles and other structures, *MapeWrap C Bi-Ax* contributes significant strength with minimal increase to the dead load supported by the structure.



### MapeWrap® G Bi-Ax

#### High-Strength, Bi-Directional E-Glass Fiber Fabric

*MapeWrap G Bi-Ax* is a high-strength, bi-directional glass fiber fabric in which the primary fibers are oriented in the 0°/90° directions. When used with the *MapeWrap* family of two-component epoxy adhesives, *MapeWrap G Bi-Ax* forms an externally bonded fiber-reinforced polymer (FRP) reinforcement system engineered to increase the strength of existing structural elements. When applied to the surface of structural members in buildings, parking garages, bridges, marine piles and other structures, *MapeWrap G Bi-Ax* contributes significant strength with minimal increase to the dead load supported by the structure, particularly in seismic applications.



### MapeWrap® G Uni-Ax

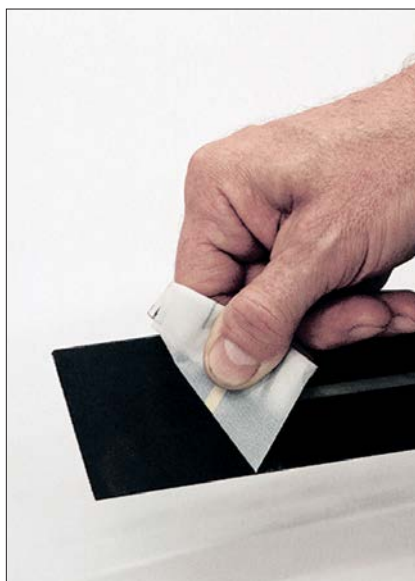
#### High-Strength, Uni-Directional E-Glass Fiber Fabric

*MapeWrap G Uni-Ax* is a high-strength, uni-directional E-glass fiber fabric that, when used with the *MapeWrap* family of two-component epoxy adhesives, forms an externally bonded fiber-reinforced polymer (FRP) reinforcement system engineered to increase the strength of structural elements. *MapeWrap G Uni-Ax 900* is applied to the surface of structural members in buildings, parking garages, bridges, marine piles and other structures to improve the strength and/or seismic performance of concrete columns, masonry and concrete walls, and concrete beam-column connections.

	Product Code	Packaging
U.S.	73D0304050	Roll: <i>MapeWrap C Bi-Ax 230</i> , 15.75' x 164' (40 cm x 50 m)

	Product Code	Packaging
U.S.	73J0610099	Roll: <i>MapeWrap G Bi-Ax 300/100, 328'</i> (100 m)

	Product Code	Packaging
U.S.	73L2106050	Roll: <i>MapeWrap G Uni-Ax 900</i> , 23.6' x 164' (60 cm x 50 m)



### Carboplate® E 170

#### Pultruded Carbon Fiber Plate Pre- Impregnated in Epoxy-Based Resin

*Carboplate E 170* is a range of pultruded carbon-fiber-reinforced polymer (CFRP) plates designed for external structural strengthening of existing concrete, wood and masonry. *Carboplate E 170* is externally bonded onto the surface of the substrate to strengthen and stiffen existing structures, using an epoxy resin specifically designed for the application. *Carboplate E 170* is protected on both sides by a plastic film, eliminating the need for solvent cleaning of the plates before installation.

*Carboplate E 170* is available in thicknesses of 0.047" and 0.055" (1.2 and 1.4 mm).

Product Code	Packaging
73A3205025W	Roll: 1.4 mm (55.1 mils) / 1.97" x 82' (50 mm x 25 m)
73A3205099W	Roll: 1.4 mm (55.1 mils) / 1.97" x 328' (50 mm x 100 m)
73A3210025W	Roll: 1.4 mm (55.1 mils) / 3.94" x 82' (100 mm x 25 m)
73A3210099W	Roll: 1.4 mm (55.1 mils) / 3.94" x 328' (100 mm x 100 m)
U.S. 73A3105025W	Roll: 1.2 mm (47.2 mils) / 1.97" x 82' (50 mm x 25 m)
73A3105099W	Roll: 1.2 mm (47.2 mils) / 1.97" x 328' (50 mm x 100 m)
73A3110025W	Roll: 1.2 mm (47.2 mils) / 3.94" x 82' (100 mm x 25 m)
73A3110099W	Roll: 1.2 mm (47.2 mils) / 3.94" x 328' (100 mm x 100 m)



### Maperod® C / Maperod G

#### Pultruded Carbon or Glass Fiber Bars for the Repair and Structural Strengthening of Damaged Concrete, Timber and Masonry Elements

*Maperod C* is a range of deformed, pultruded carbon fiber bars in an epoxy matrix with a peel-ply film, and used for internal strengthening of concrete and masonry substrates. *Maperod G* is a range of deformed, pultruded glass fiber bars in an epoxy-modified, vinyl-ester matrix, characterized by high tensile strength and most often used in masonry applications.

Product Code	Packaging
73W2030406	Rods: <i>Maperod C</i> 150/10, 3/8" x 19.68' (10 mm x 6 m)
73W2030330	Rods: <i>Maperod C</i> 150/8, 5/16" x 19.68' (8 mm x 6 m)
U.S. 73W3010460	Rods: <i>Maperod G</i> 40/10, 3/8" x 19.68' (10 mm x 6 m)
73W3010560	Rods: <i>Maperod G</i> 40/12, 1/2" x 19.68' (12 mm x 6 m)



### MapeWrap® C Fiocco / MapeWrap G Fiocco

#### Uni-Directional, High-Strength Carbon or Glass Fiber Cords for Impregnation with MapeWrap 21 for Anchorage and Structural Connections

*MapeWrap C Fiocco* is a range of uni-directional carbon fibers, contained inside gauze wrapping, that gives its characteristic "cord" appearance. *MapeWrap G Fiocco* is a similar range of products that utilize uni-axial glass fibers wrapped in gauze. The *MapeWrap Fiocco* line of products is typically used for anchorage of the *MapeWrap* and *Carboplate®* fiber-reinforced polymer (FRP) strengthening systems in concrete, masonry, brick and timber substrates. *MapeWrap Fiocco* carbon and glass cords may also be used for creating structural connections between concrete, masonry, brick and timber elements with the *MapeWrap* and *Carboplate FRP* systems.

Product Code	Packaging
73O20610	Cord: <i>MapeWrap C Fiocco</i> , 1/4" (6 mm)
73O20810	Cord: <i>MapeWrap C Fiocco</i> , 5/16" (8 mm)
U.S. 73O21010	Cord: <i>MapeWrap C Fiocco</i> , 3/8" (10 mm)
73O21210	Cord: <i>MapeWrap C Fiocco</i> , 1/2" (12 mm)
73O30810	Cord: <i>MapeWrap G Fiocco</i> , 5/16" (8 mm)



### Mapefer™ 1K [NA]

#### Corrosion-Inhibiting Coating for Reinforcing Steel

Mapefer 1K is a one-component, anti-corrosion coating based on unique polymers, cementitious binders and corrosion inhibitors. Mapefer 1K is specially formulated for application on properly prepared reinforcing steel to inhibit oxidation and rust formation. This product features a very low emission of volatile organic compounds and includes an offset of greenhouse gas emissions.

	Product Code	Packaging
U.S.	2766105	10 lbs. (4.54 kg)



### Planibond® 3C

#### Three-Component, Cementitious Corrosion Inhibitor and Bonding Agent

Planibond 3C is a three-component, cementitious, moisture-tolerant, water-based, epoxy-modified corrosion inhibitor and bonding agent.

	Product Code	Packaging
U.S.	1964005KIT	Large kit (Parts A and B): 10.8 lbs. (4.90 kg)
	1964220	Part C: 44 lbs. (20.0 kg)
	1964007KIT	Small kit: 1.74 U.S. gals. (6.59 L)



### Mapeshield™ CI 100

#### Surface-Applied Corrosion Inhibitor

Mapeshield CI 100 is a surface-applied corrosion inhibitor designed to penetrate concrete and protect embedded steel reinforcement. Mapeshield CI 100 delays the corrosion process and reduces overall corrosion activity.

	Product Code	Packaging
U.S.	2098119	5 U.S. gals. (18.9 L)
	2098178	55 U.S. gals. (208 L)



**Mapeshield™ CI 110**

**Surface-Applied Corrosion Inhibitor with Integrated Water Repellent**

*Mapeshield CI 110* is a surface-applied corrosion inhibitor, with an integrated moisture repellent, designed to penetrate concrete and protect embedded steel reinforcement. *Mapeshield CI 110* delays the corrosion process, reduces overall corrosion activity and creates a water-repelling barrier on the surface of the concrete.



**Mapeshield™ I**

**Pure Zinc Galvanic Anode**

*Mapeshield I* is a pure zinc anode for cathodic protection of reinforcing steel against corrosion in new, reinforced structures as well as structures requiring repair.



**Planibond® AE**

**High-Strength, Nonsag, Epoxy Anchoring Gel**

*Planibond AE* is a high-strength, moisture-tolerant, zero-VOC, two-part, nonsag, epoxy anchoring gel designed for a wide variety of bonding and repair applications.

	Product Code	Packaging
U.S.	2098419	5 U.S. gals. (18.9 L)
	2098478	55 U.S. gals. (208 L)

	Product Code	Packaging
U.S.	2099024	<i>Mapeshield I 10/10</i> , 24 per carton
	2099124	<i>Mapeshield I 10/20</i> , 24 per carton
	2099212	<i>Mapeshield I 30/10</i> , 12 per carton
	2099312	<i>Mapeshield I 30/20</i> , 12 per carton
	2099650	<i>Mapeshield I 70</i> , 50 per carton
	2099550	<i>Mapeshield I 105</i> , 50 per carton

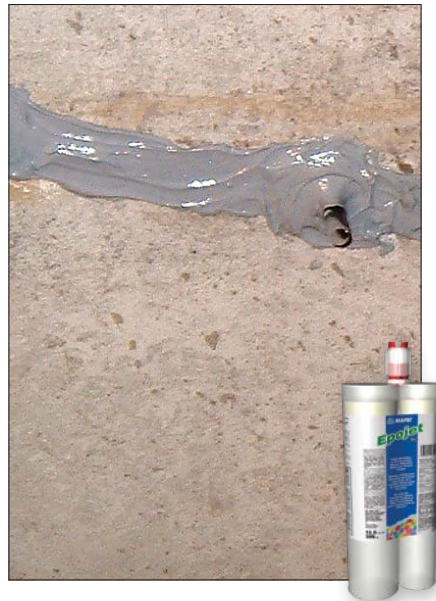
	Product Code	Packaging
U.S.	1961540	Dual cartridge: 20.3 U.S. oz. (600 mL)
	1961508KIT	Kit: 2 U.S. gals. (7.57 L)



### Planibond® AE Fast

#### Rapid-Setting, High-Strength, Epoxy Anchoring Gel

Planibond AE Fast is a rapid-setting, high-strength, moisture-tolerant, two-component, 100%-solids, epoxy anchoring gel designed for a wide variety of vertical/horizontal bonding and repair applications.

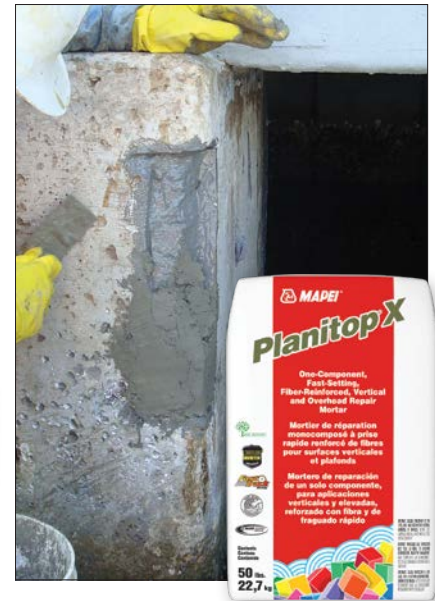


### Epojet™ [NA]

#### High-Modulus, Low-Viscosity, Epoxy Injection Resin for Crack Repair

##### For professional use only

Epojet is a high-strength, two-component, 100%-solids, low-viscosity, epoxy resin for pressure injection and sealing of cracks in structural concrete, masonry and wood.



### Planitop® X

#### One-Component, Fast-Setting, Fiber-Reinforced, Vertical and Overhead Repair Mortar

Planitop X is a one-component, fiber-reinforced, shrinkage-compensated, high-early-strength, fast-setting, polymer-modified, high-build cementitious repair mortar with a corrosion inhibitor.

	Product Code	Packaging
U.S.	1962840	Dual cartridge: 20.3 U.S. oz. (600 mL)
	1962808KIT	Kit: 2 U.S. gals. (7.57 L)

	Product Code	Packaging
U.S.	1561144	Dual cartridge: 13.5 U.S. oz. (399 mL)
	1561111KIT	Kit: 3 U.S. gals. (11.4 L)

	Product Code	Packaging
U.S.	2757423	Bag: 50 lbs. (22.7 kg)
	2757405	Bag: 10 lbs. (4.54 kg)
	2757423BK	Pail: 50 lbs. (22.7 kg)





### Planitop® XS

#### One-Component, Fast-Setting, Extended-Working-Time, Vertical and Overhead Repair Mortar

*Planitop XS* is an extended-working-time variation of *Planitop X*. Shrinkage-compensated, fiber-reinforced, polymer-modified and containing a proprietary corrosion inhibitor, *Planitop XS* features *Planitop X*'s outstanding workability and versatility. This product features a very low emission of volatile organic compounds and includes an offset of greenhouse gas emissions.



### Planitop® 12 SR

#### Sulfate-Resistant, Vertical, Overhead and Horizontal Repair Mortar with Silica Fume

*Planitop 12 SR* is a sulfate-resistant, one-component, shrinkage-compensated, cementitious repair mortar. *Planitop 12 SR* is fiber-reinforced and contains both silica fume and a corrosion inhibitor, and is intended for the repair of vertical, overhead and horizontal concrete surfaces.



### Planitop® 15

#### Form-and-Pour, One-Component Repair Mortar

*Planitop 15* is a one-component, shrinkage-compensated, cementitious, fiber-reinforced, fluid mortar. *Planitop 15* contains a corrosion inhibitor and silica fume, and is well-suited for form-and-pour and form-and-pump applications where high early strength and flowability are required.

	Product Code	Packaging
U.S.	2757323 2757323BK	Bag: 50 lbs. (22.7 kg) Pail: 50 lbs. (22.7 kg)

	Product Code	Packaging
U.S.	2759525	Bag: 55 lbs. (24.9 kg)

	Product Code	Packaging
U.S.	2757925	Bag: 55 lbs. (24.9 kg)





### Mapelastic®

#### Flexible, Cementitious Membrane for Waterproofing and Protecting Concrete and Masonry

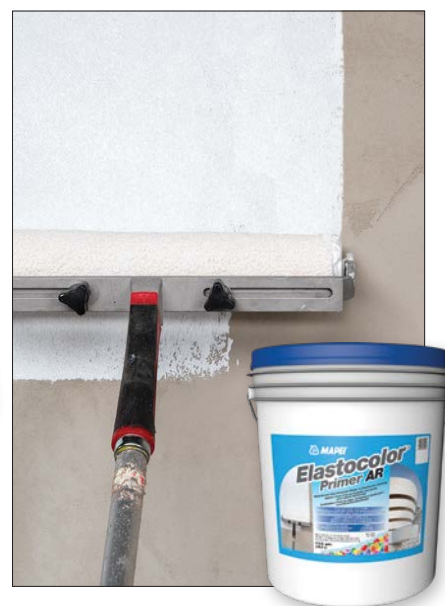
Mapelastic is a two-component, cementitious membrane that waterproofs concrete and masonry. It also offers protection against chemical attack from de-icing salts, sulfates, chlorides and carbon dioxide.



### Elastocolor® Texture

#### Water-Based, High-Build, Acrylic, Textured Coating

Elastocolor Texture is a specially designed coating for use on exterior, above-grade, new and previously coated concrete and masonry surfaces. Elastocolor Texture's unique blend of aggregates produces an attractive, high-build, textured finish. It is ideal for use on restoration projects to reduce the appearance of surface imperfections and repairs or wherever a uniform textured finish is desired. Elastocolor Texture remains highly flexible and offers excellent filling properties and adhesion to prepared substrates.



### Elastocolor® Primer AR

#### Water-Based, Alkali-Resistant Primer for Elastocolor Coatings

Elastocolor Primer AR is a specially designed primer for use on exterior, above-grade, new and previously coated concrete and masonry surfaces. Elastocolor Primer AR will protect subsequent coatings from the damaging effects of high pH present in freshly placed cement-based products. It remains highly flexible, offers excellent filling and adhesion on prepared substrates, and is designed for compatibility with MAPEI's Elastocolor coating systems.

	Product Code	Packaging
U.S.	6UM502731 (Silver)	Part A, Bag: 50 lbs. (22.7 kg)
	6UM500031 (White)	Part A, Bag: 50 lbs. (22.7 kg)
	6UM999931	Part B, Jug: 2 U.S. gals. (7.57 L)

	Product Code	Packaging
U.S.	7UG091019	Pail: Medium base, 5 U.S. gals. (18.9 L)
	7UG090019	Pail: Pastel base, 5 U.S. gals. (18.9 L)

	Product Code	Packaging
U.S.	7UH094019	Bucket: Pastel base, 5 U.S. gals. (18.9 L)



**Elastocolor® Primer WB**

**Water-Based, 100%-Acrylic Primer for Elastocolor Coatings**

*Elastocolor Primer WB* is a clear, water-based, 100%-acrylic primer for use with *Elastocolor* coatings. *Elastocolor Primer WB* improves adhesion on porous, dusting and new substrates.



**Elastocolor® Flex**

**Water-Based, 100%-Acrylic, Elastomeric Waterproof Coating**

*Elastocolor Flex* is an elastomeric, high-build, water-based, 100%-acrylic coating to protect and decorate above-grade, vertical exterior concrete, masonry, stucco and EIFS systems. *Elastocolor Flex* is available in two textures (smooth and fine), in a wide range of standard colors and in an unlimited number of custom colors to increase its design versatility.



**Elastocolor® Coat**

**Water-Based, High-Build, 100%-Acrylic, Waterproof Coating**

*Elastocolor Coat* is a water-based, high-build, 100%-acrylic coating designed to protect and decorate above-grade, exterior/interior vertical concrete, masonry, stucco, fiber-reinforced polymer (FRP) composites and EIFS systems. *Elastocolor Coat* is available in two textures (smooth and fine), in a wide range of standard colors and in an unlimited number of custom colors to increase its design versatility.

	Product Code	Packaging
U.S.	2559019	Pail: 5 U.S. gals. (18.9 L)

	Product Code	Packaging
U.S.	Smooth texture	
	7UC090019	Pail: Pastel base, 5 U.S. gals. (18.9 L)
	7UC091019	Pail: Medium base, 5 U.S. gals. (18.9 L)
	7UC092019	Pail: Transparent base, 5 U.S. gals. (18.9 L)
	Fine texture	
	7UB090019	Pail: Pastel base, 5 U.S. gals. (18.9 L)
	7UB091019	Pail: Medium base, 5 U.S. gals. (18.9 L)
	7UB092019	Pail: Transparent base, 5 U.S. gals. (18.9 L)

	Product Code	Packaging
U.S.	Smooth texture	
	7UE090019	Pail: Pastel base, 5 U.S. gals. (18.9 L)
	7UE091019	Pail: Medium base, 5 U.S. gals. (18.9 L)
	7UE092019	Pail: Transparent base, 5 U.S. gals. (18.9 L)
	Fine texture	
	7UD090019	Pail: Pastel base, 5 U.S. gals. (18.9 L)
	7UD091019	Pail: Medium base, 5 U.S. gals. (18.9 L)
	7UD092019	Pail: Transparent base, 5 U.S. gals. (18.9 L)

# **BUILDING A PRESENT DESIGNED TO HAVE A FUTURE**



About MAPEI



# SUSTAINABILITY

is built into everything we do

MAPEI's processes focus on sustaining the environment for today and tomorrow.  
We call it **"The 3 P's of MAPEI: People, Planet and Products"**



**PEOPLE**



**PLANET**



**PRODUCTS**

MAPEI's corporate vision, including our Code of Ethics, has always included the philosophy of sustainability.

Our operational processes are designed to reduce our carbon footprint and maximize our environmental "handprint."

With many sustainable attributes and certifications, our products can contribute to a variety of green building standards and certification programs.

For more information about our sustainability commitment, visit [www.mapei.com/us/en-us/about-us/sustainability/zero](http://www.mapei.com/us/en-us/about-us/sustainability/zero)

Learn More



#HealthandtheEnvironment #MAPEIusa



MAPEI USA • MAPEI Caribe





# BUILDING AND INFRASTRUCTURE PRODUCT SOLUTIONS



Epoxy joint sealants and  
deck overlays/adhesives



Concrete restoration systems



FRP strengthening systems



Underground tunneling products



Products for sports surfaces



Concrete admixtures  
and additives



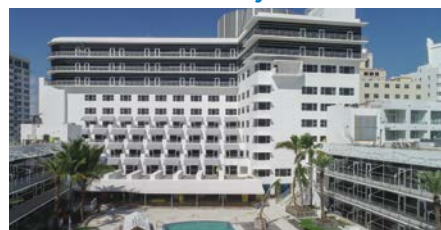
Waterproofing systems



Deck and floor-covering  
installation systems



Self-leveling concrete  
flooring and overlays



Concrete finish coatings



**MAPEI Headquarters  
of North America**

1144 East Newport Center Drive  
Deerfield Beach, Florida 33442  
1-888-US-MAPEI (1-888-876-2734) /  
(954) 246-8888

**Technical Services**

U.S. and Puerto Rico:

Flooring: 1-800-992-6273

Concrete and heavy construction:  
1-888-365-0614

**Customer Service**

1-800-42-MAPEI (1-800-426-2734)

Copyright ©2025 by MAPEI Corporation ("MAPEI") and all rights are reserved. All intellectual property rights and other information contained in this document are the exclusive property of MAPEI (or its parent or related companies), unless otherwise noted. No part of this document may be reproduced or transmitted in any form without the prior written consent of MAPEI.

Printed in the USA.



— MAPEI USA • MAPEI Caribe —